



EBS MKII

Emergency Breathing System

BUYERS GUIDE

Version 2.0



EBS BUYERS GUIDE

Four different choices for a customized product

SELECTION A

Light weight first stages made of hard anodized high tensile aluminium for durability and performance in all conditions.

1st stage regulator UNF 5/8
incl. Cylinder valve and Pressure gauge
W: 272g/0.60lb



1st stage regulator m18
incl. Cylinder valve and Pressure gauge
W: 272g/0.60lb



SELECTION B

PU braided highflex hoses. 30% lighter than a comparable rubber hose.

Low Pressure Hose 20" 50 cm
W: 120g/0.26lb



Low Pressure Hose 24" 60 cm
W: 137g/0.30lb



Low Pressure Hose 27" 70 cm
W: 150g/0.33lb



SELECTION C

Demand valves from the proven Cyklon range for max reliability. Works perfectly in any orientation.

LIGHTWEIGHT



2nd stage regulator
W: 151g/0.33lb



2nd stage regulator
W: 151g/0.33lb

HEAVY DUTY



2nd stage regulator
W: 222g/0.49lb



2nd stage regulator
W: 222g/0.49lb

SELECTION D

CE - European standards
DOT/TC - N American standards



Cylinder CE 0.4L/3.3cuft
UNF 5/8x18 232bar/3365psi
Aluminium W: 630g/1.39lb
Ø: 60mm/2.36"
L: 250mm/9.84"



Cylinder CE 0.29L/2.0cuft
UNF 5/8x18 200bar/2901psi
Aluminium W: 391g/0.86lb
Ø: 50mm/1.97"
L: 235mm/9.25"



Cylinder CE 0.25L/2.6cuft
UNF 5/8x18 300bar/4351psi
Composite W: 270g/0.60lb
Ø: 51mm/2.00"
L: 221mm/8.70"



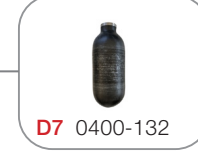
Cylinder CE/DOT/TC 0.32L/3.4cuft
UNF 5/8x18 300bar/4351psi
Composite W: 498g/1.10lb
Ø: 69mm/2.72"
L: 167mm/6.58"
(not in stock)



Cylinder DOT/TC 0.22L/1.6cuft
UNF 5/8x18 200bar/2901psi
Aluminium W: 320g/0.71lb
Ø: 50mm/1.97"
L: 215mm/8.47"



Cylinder DOT/TC 0.29L/2.0cuft
UNF 5/8x18 200bar/2901psi
Aluminium W: 391g/0.86lb
Ø: 50mm/1.97"
L: 235mm/9.25"



Cylinder CE 0.25L/2.6cuft
m18x1.5 300bar/4351psi
Composite W: 289g/0.64lb
Ø: 60mm/2.36"
L: 156mm/6.14"
(not in stock)



Without Cylinder

ORDER GUIDE

Fill in the digit from each selection in the boxes A B C and D below.
Example; if A1 selected, fill in 1 in the A box. All accessories are ordered separately.

A	B	C	D
<input type="text"/>	<input type="text"/>	<input type="text"/>	<input type="text"/>

Article no. 5000-015

FEATURES

- Breathing guaranteed in all orientations, ambidextrous demand valve
- Cold water approved
- Tested to 75lpm
- Possibility of customization
- Technical service available
- Easy and low-cost maintenance
- Light weight <1kg
- Made in Sweden

This **Poseidon EBS MkII** is an EN 4856 Category A underwater escape device.

The Poseidon EBS is intended for use as a generic underwater escape device but can be used as a helicopter escape device to assist aircrew members or passengers in making an emergency egress from a submerged aircraft. Due to its limited air volume, it is not intended egressing from depths greater than 10 meters.

General	
Maximum Operational depth	Certified to 10 m (33 ft)
Approved gas	Air according to EN12021
Maximum working pressure	300 Bar (4351 psi)
Cold water performance	>4deg C
Cleaned to hydrocarbon levels <50mg/m2	No
O-ring materials	Nitrile, EPDM
Lubricants	Poseidon Regulator grease 8516 & silicone oil.
Warranty	12 months
Total weight	813 g / 28,7 Oz



The Poseidon EBS is tested against EN4856 ColdWater and CAP1034 Emergency Breathing System standard by Civil Aviation Authority (CAA).

FUNCTIONAL OVERVIEW



SELECTION OF FILLING ADAPTORS FOR EBS MKII 5000-015

EXTERNAL SOURCE

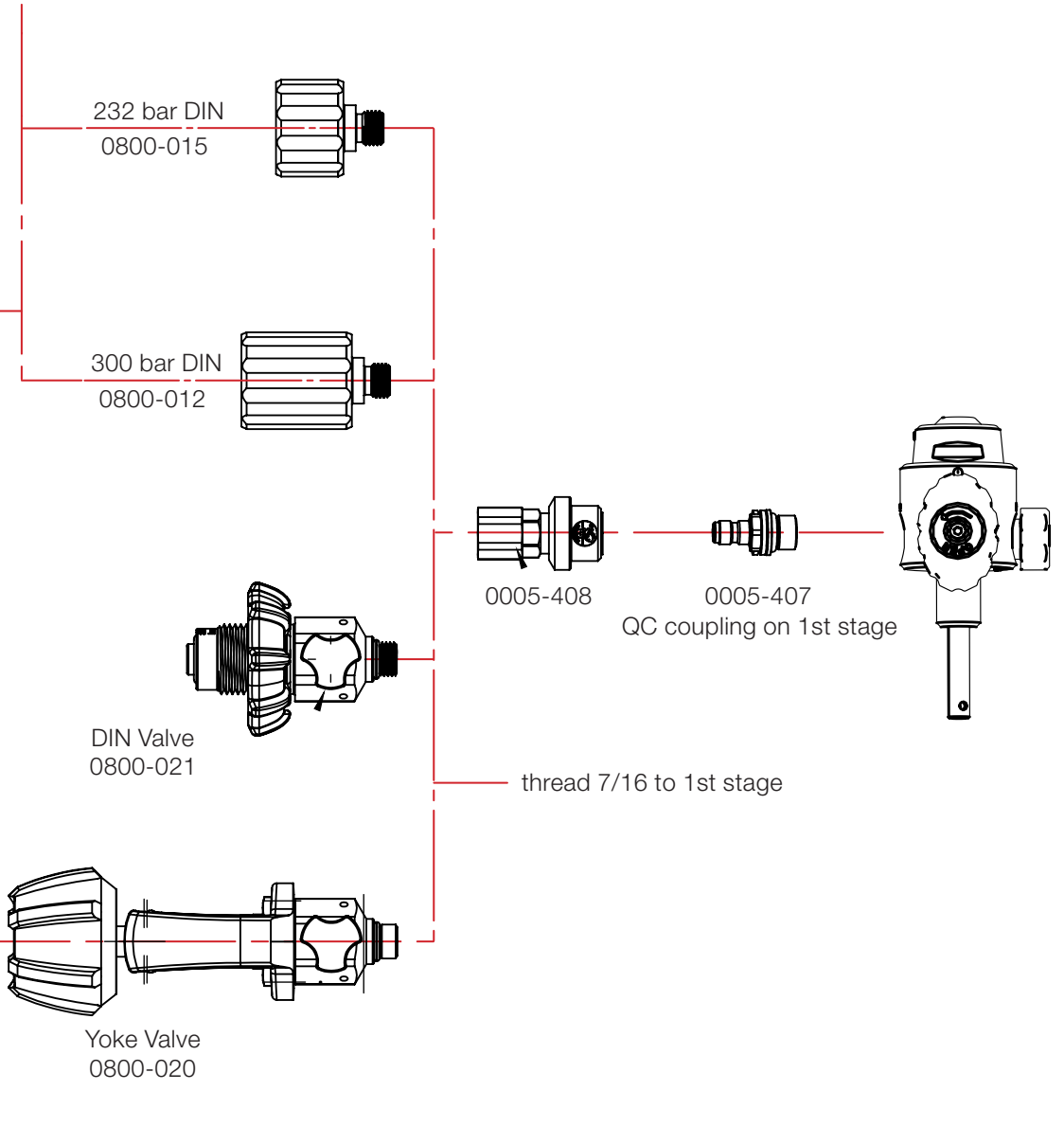
Filling hose 200-300 bar with gauge 0131-001



1m HP hose

DIN G5/8 300 bar

DIN G5/8 300 bar



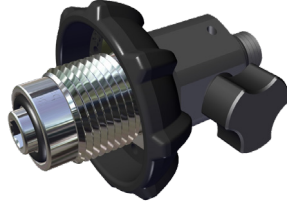
0800-015



0800-012



0800-020



0800-021



0005-408



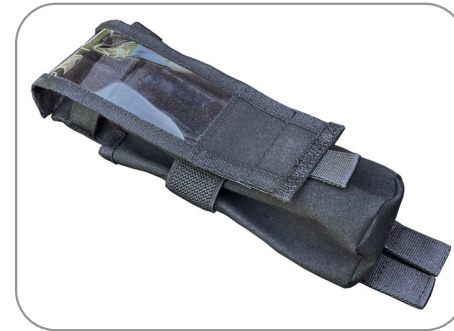
0005-407

EBS ACCESSORIES



**EBS Pocket
with Molle system**

5836-261



**EBS demand
valve holder**

5836-262

